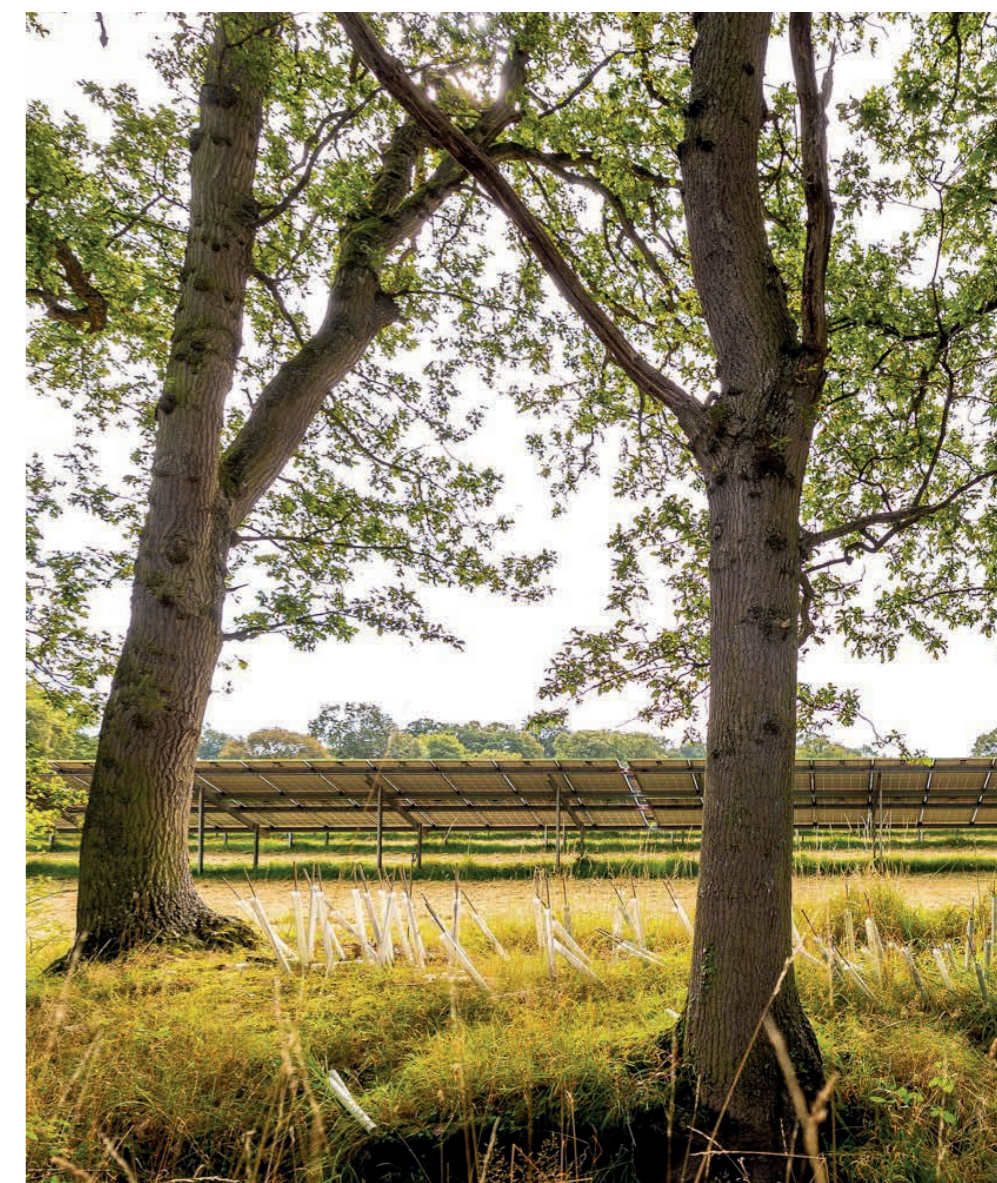
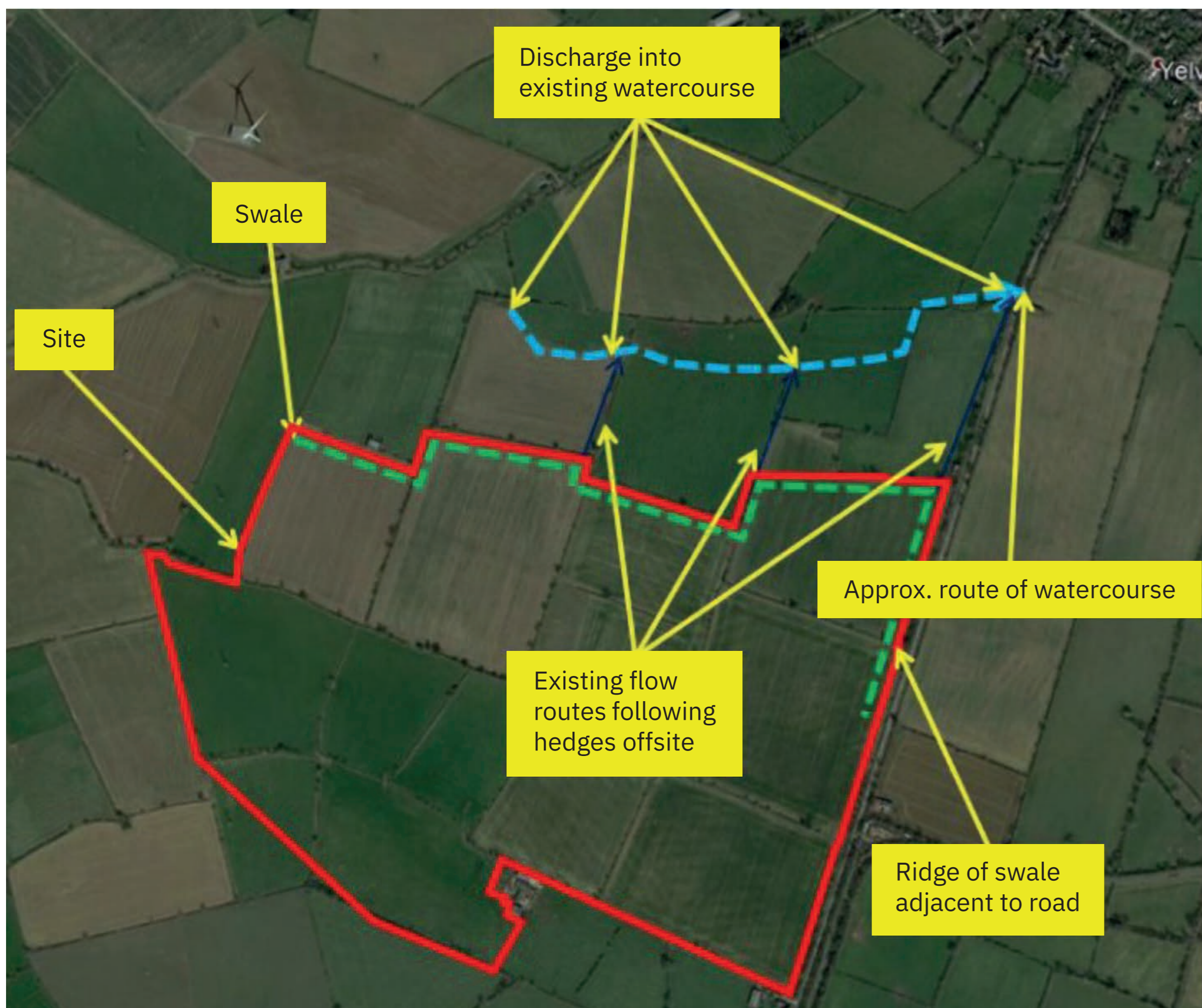


Environmental Works and Next Steps



Biodiversity enhancements

The site was in use as arable land and hence species-poor. Close collaboration during planning stages between the project team and statutory consultees such as the County Ecologist has resulted in a number of enhancements that will support local wildlife and their habitat. Examples include planting new trees and shrubs, improving existing hedgerows by filling in gaps, creating species-rich wildflower meadows and providing owl and bat boxes.



Swales

The drainage strategy, in line with the Flood Risk Assessment (FRA), is to manage and control flows from the site using swales, which will store run-off water and slow the flow into the local drainage system. In line with the FRA, the storage allowance calculations accommodate the impacts of climate change. Drainage engineers have worked to design the required scheme which will begin construction in July. The swale areas will be planted with Meadow mix for Wetlands to improve biodiversity on site.

Indicative timeline

June – September



Site deliveries for grid connection and substation

Summer 2023



Infrastructure installation and cabling

Early Autumn 2023



Testing and commissioning

Late Autumn 2023



Expected contractor demobilisation

Development so far



- **February:** Construction of compound, fencing and access track.
- **March:** Piling and building panel frames. CCTV security equipment put in place.
- **April:** Panel installation, Archaeology areas un-touched, observations revealed no finds.
- **May:** Finish mounting panels. Start cabling and electrical works.
- **June:** Delivery of inverters, transformers and substation equipment to site.
- **July:** Start of swale construction.

Community Benefit Fund

- In accordance with best practice in the renewables industry, Bluefield is committed to providing a Community Benefit Fund (CBF) associated with Yelvertoft Solar Farm.
- The CBF amounts to £10,000 per year, inflation-linked, for the operational life of the solar farm which is expected to last for up to 40 years.
- The aim of the CBF is to fund local community projects and initiatives that will benefit the parish of Yelvertoft, for example in the fields of **conservation & biodiversity, health & wellbeing, alleviation of poverty, education** or **energy efficiency**.
- The fund is underpinned by a legal agreement between Yelvertoft Solar Farm Ltd (the Bluefield company that owns the project) and Yelvertoft Parish Council, who will be administering it with support from leading UK fund administrators GrantScape. Further details on how to apply for a grant will be available from the Parish Council in due course.
- The Parish Council is keen to hear any ideas on how you think the CBF could make a positive contribution to the Yelvertoft community. Please feel free to write a post-it note and stick it onto the board, or submit your suggestions in writing to a member of the team. All contributions will be forwarded on to Yelvertoft Parish Council.

A yellow sticky note with handwritten text in black ink, placed in the top-left corner of a large dotted-line box.

Please put your suggestions on a post-it note and stick them here...